



2025

ANNUAL REPORT

MIAMI COUNTY SHERIFF'S OFFICE

209 S. Pearl Street Paola, Kansas 66071
913-294-3232



FROM THE SHERIFF

On behalf of the Miami County Sheriff's Office, I am proud to present our 2025 Annual Report and reflect on another year of service to our community.

Serving as your Sheriff is an honor, and our deputies and staff remain committed to protecting the lives, rights, and property of the citizens of Miami County with professionalism, integrity, and fairness. Throughout 2025, we continued to focus on public safety, accountability, and strengthening the trust we share with those we serve.

This report provides insight into our operations, accomplishments, and ongoing efforts to meet the evolving needs of our community. None of this work would be possible without the support of our citizens and our dedicated personnel.

Thank you for your continued trust and support.

Sheriff Frank W. Kelly

COMMAND STAFF



The Miami County Sheriff's Office Command Staff provides leadership, direction, and oversight to ensure the effective operation of the agency and the delivery of professional law enforcement services to the community.

The Command Staff consists of Undersheriff Matthew P. Kelly, who assists the Sheriff in the overall management of the Sheriff's Office and daily operations; Captain Ethan Rodgers, who oversees the Operations Divisions, including patrol, investigations, communications, and specialized units; and Captain Andrew Roush, who oversees the Jail Division and is responsible for the safe, secure, and efficient operation of the county detention facility.

Together, the Command Staff works collaboratively to set strategic goals, ensure accountability, and support the deputies and staff who serve the citizens of Miami County.

The seal of the Miami County Sheriff's Office is a gold-colored five-pointed star. The word "SHERIFF" is arched across the top, and "MIAMI COUNTY KANSAS" is arched across the bottom. The center of the star features a landscape scene with a sun, mountains, a river, and a building. The words "MIAMI COUNTY" are written in a smaller arc above the landscape, and "KANSAS" is written below it. The star is set against a dark background.

MISSION & VISION

The Sheriff's Mission

The sheriff, as one of many offices of government, shall work toward creating a high quality of life in the community by actively working with residents, elected and appointed officials, and other government agencies to reduce crime and the fear of it, as well as protect lives and property from criminal acts or traffic mishaps. In order to accomplish our mission, we will concentrate our efforts on cooperative, proactive crime prevention measures; engage in visible and directed patrol efforts to deter crime and traffic problems; to use human initiative, systematic and thorough techniques and available technology to identify, apprehend and bring to justice criminal offenders; to recover and return stolen property to victims as quickly as possible; to move traffic as safely and expeditiously as possible; and, to provide the highest level of public service directed toward community problem-solving.

Our Vision

A society free from crime and disorder remains an unachieved ideal. Nevertheless, consistent with the values of a free society, we will strive to achieve as closely as possible that ideal. We will provide friendly service of superior quality and value, which best meets the needs and expectations of our community. We will achieve that purpose through an organization and work environment that attracts the finest people, fully develops and challenges individual talents, encourages free and spirited collaboration to drive the organization ahead, and maintains the sheriff's office's historic principles of integrity and commitment to do the right thing.

Law Enforcement Values

- Human life and dignity are above all else.
- Unquestioned integrity is the basis for community trust.
- Belief in and respect for principles embodied in the Constitution and recognition of the authority of duly enacted laws.
- Striving for personal and professional excellence and demonstrating pride in our work.
- Law enforcement is accountable to the residents they serve, who are the source of legitimate law enforcement authority.
- A belief that cooperation and teamwork enable the sheriff to combine diverse backgrounds, skills, and styles to achieve common goals.
- The foundation of harmonious relationships, which create a willingness of the public to work with the sheriff, is simple friendliness.
- The sheriff's office's effectiveness is achieved when the sheriff and the public work together to identify and solve community problems.
- Pride in ourselves, our profession, and our sheriff's office - knowing that we are doing important work for the citizens of our community.

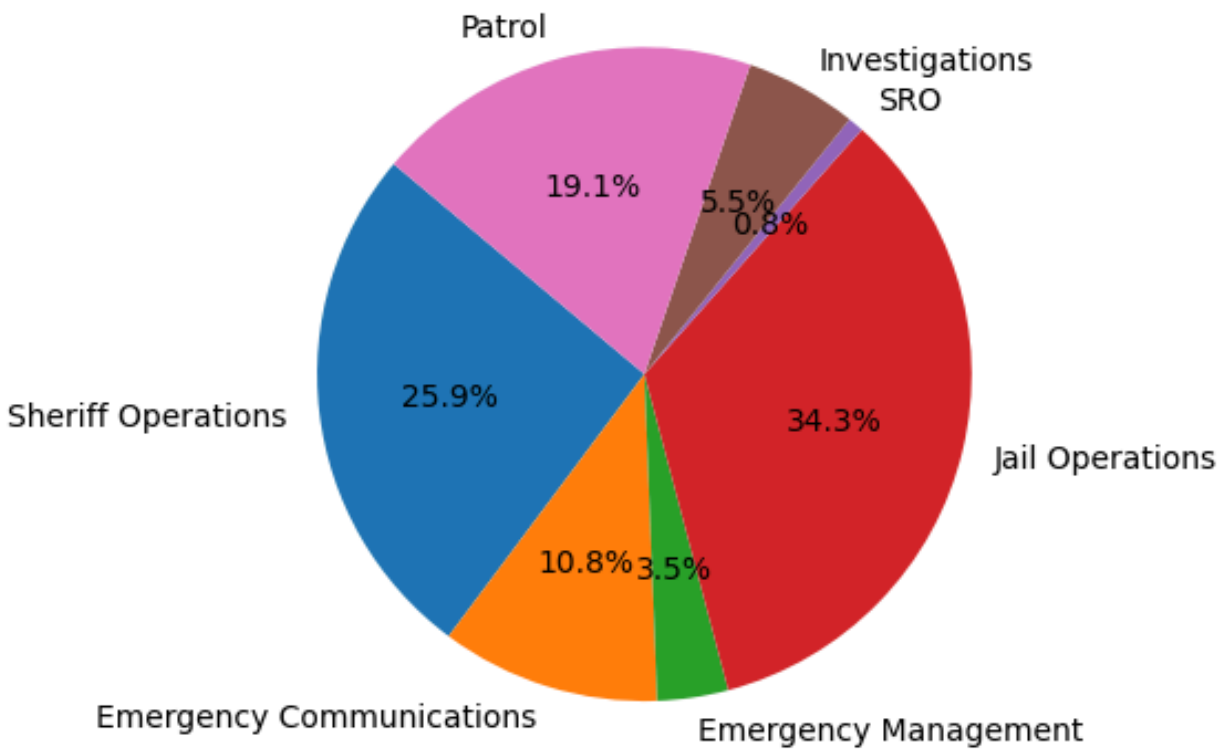
BUDGET

In 2025 the Sheriff's Office total budget was \$7,737,486.

The breakdown:

Sheriff Operations:	\$2,004,284
Emergency Communications:	\$838,255
Emergency Management:	\$271,118
Jail Operations:	\$2,654,905
School Resource Officer (SRO):	\$60,025
Investigations:	\$428,087
Patrol:	\$1,480,812

Miami County Sheriff's Office Budget Allocation



PATROL DIVISION



The Miami County Sheriff's Office Patrol Division consists of 14 Deputies and 4 Sergeants who provide primary law enforcement services throughout the entire 590 square miles of Miami County. Patrol personnel are often the first point of contact for citizens and play a critical role in maintaining public safety.

Patrol Deputies are responsible for responding to calls for service, enforcing state and local laws, conducting traffic enforcement, investigating crashes, and providing initial response to criminal incidents. Deputies also assist motorists, conduct welfare checks, and work proactively to deter crime through high-visibility patrols.

Patrol Deputies work 8- and 10-hour shifts, while Patrol Sergeants work 12-hour shifts to provide consistent supervision, coordinate daily operations, and support deputies in the field. Together, the Patrol Division works around the clock to ensure the safety and security of Miami County residents and visitors.

ANNUAL STATS

Miami County Sheriff's Office Annual Stats 2025

	Year End 2024	Year End 2025
Calls for Service	19,367	20,420
Accident Reports Taken	489	498
Battery/DV Reports Taken	55	79
Burglaries	43	33
Drug Reports Taken	65	39
DUI Reports Taken	45	41
Homicide	2	1
Sex Crimes	17	9
Thefts of a Motor Vehicle	10	4
Thefts & Identity Thefts	90	87
Warrant Arrests	225	198
Assist Outside Agency & EMS	604	859
Citations Issued	494	462
Civil Papers Served	3,301	2,534
Code Checks Performed	3,092	2,451
Traffic Stops Conducted	3,883	3,172
VIN Inspection Completed	2,568	2,718
Total Arrests	448	354
Total Reports Taken	2,407	1,779

"SERVING AND PROTECTING THE CITIZENS OF MIAMI COUNTY SINCE 1855"

Red = Increase from prior year Green = Decrease from prior year

MIAMI COUNTY SHERIFF'S OFFICE ANNUAL STATS 2025

	JAN	FEB	MAR	APR	MAY	JUN	JUL	AUG	SEPT	OCT	NOV	DEC	YEAR END	YEAR END 2024
CALLS FOR SERVICE	1,456	1,265	1,550	1,396	1,682	1,872.00	1,830	1,452	2,258	1,930	1,990	1,739	20,420	19,367
ACCIDENT REPORTS TAKEN	37	49	41	26	28	48	23	27	31	61	85	41	497	489
BATTERY/DV REPORTS TAKEN	7	10	6	7	9	10	5	5	6	6	4	4	79	55
BURGLARIES	0	0	3	0	3	4	2	5	5	5	5	1	33	43
DRUG REPORTS TAKEN	2	4	2	2	6	6	3	3	2	3	3	3	39	65
DUI REPORTS TAKEN	2	4	1	3	4	7	3	4	2	4	5	2	41	45
HOMICIDE	0	0	0	0	0	0	0	0	0	1	0	0	1	2
SEX CRIMES	1	0	0	4	0	0	1	1	0	0	1	1	9	17
THEFTS OF A MOTOR VEHICLE	2	0	0	0	1	0	0	0	1	0	0	0	4	10
THEFTS & IDENTITY THEFTS	4	6	3	7	7	10	5	7	12	12	8	6	87	90
WARRANT ARRESTS	21	15	27	19	18	24	10	14	14	12	12	12	198	225
ASSIST OUTSIDE AGENCY & EMS	53	51	60	39	86	68	60	80	92	71	114	85	859	604
CITATIONS ISSUED	47	37	38	35	64	42	36	31	28	25	41	38	462	494
CIVIL PAPERS SERVED	233	217	306	289	188	165	203	215	147	209	190	172	2,534	3,301
CODE CHECKS PERFORMED	356	272	319	193	164	153	185	157	243	138	162	109	2,451	3,092
TRAFFIC STOPS CONDUCTED	220	203	166	249	239	340	150	140	437	283	324	421	3,172	3,883
VIN INSPECTION COMPLETED	197	182	228	200	238	218	265	271	262	253	206	198	2,718	2,568
TOTAL ARRESTS	35	28	36	24	39	48	21	28	27	24	20	24	354	448
TOTAL REPORTS TAKEN	156	167	173	150	133	145	117	126	141	174	177	120	1,779	2,407

"SERVING AND PROTECTING THE CITIZENS OF MIAMI COUNTY SINCE 1855"

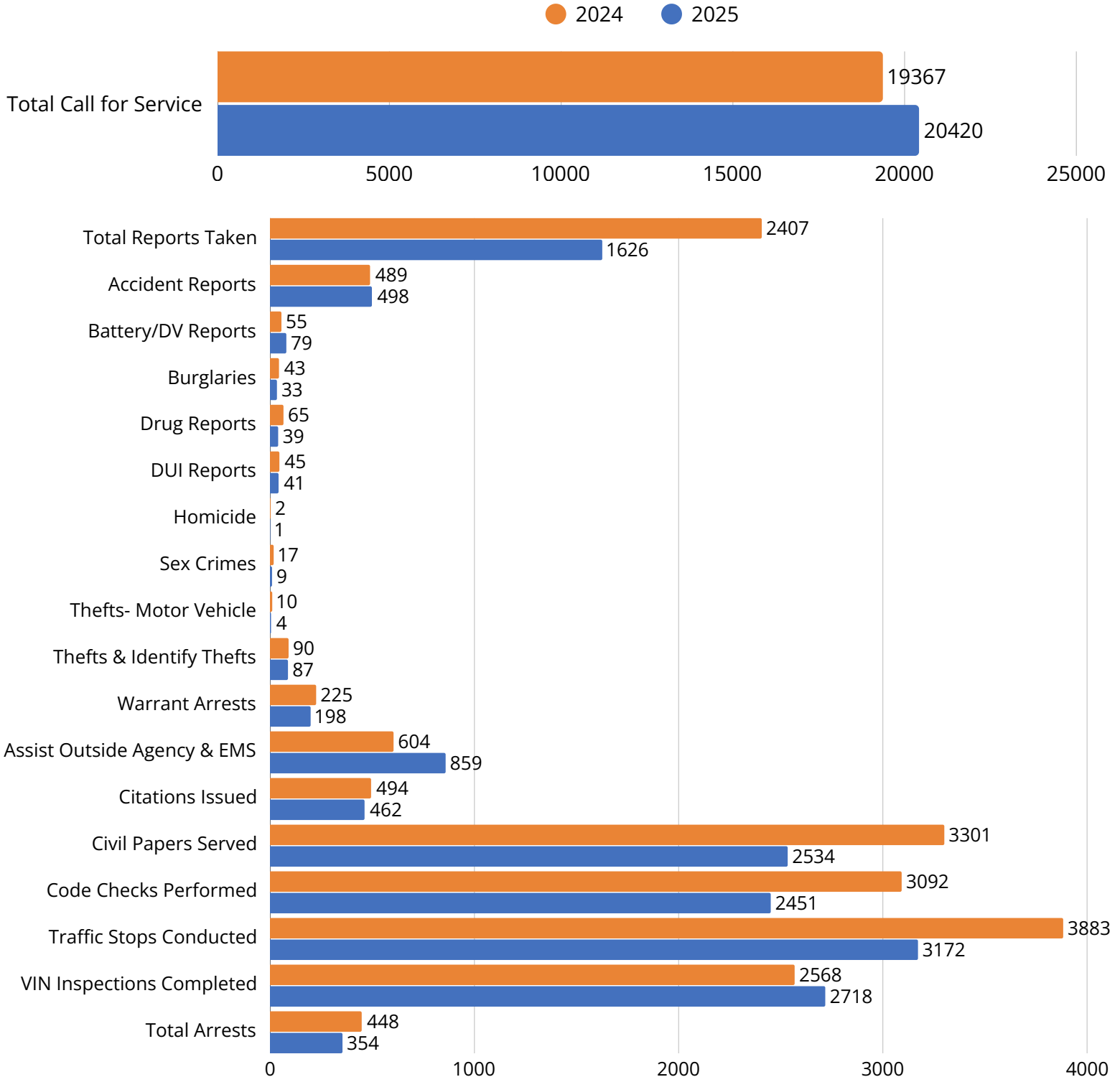
Red-Increase from prior month

Blue-no change from prior month

Green-Decrease from prior month

ANNUAL STATS

MIAMI COUNTY SHERIFF'S OFFICE ANNUAL STATS COMPARISON: 2024 - 2025





Miami County Sheriff's Office

209 S Pearl St, Paola KS 66071

(913) 294-3232

Crime Rate Statistics

2025

Calculated per every 1,000 residents

Miami County has 36,141 total residents

Property Crimes	Person Crimes	
0.8	1.1	First Quarter
1.5	1.4	Second Quarter
1.7	0.8	Third Quarter
1.7	0.8	Fourth Quarter

Total Crimes per 1,000 Residents

2024 -	6.8 Property Crimes	3.5 Person Crimes
2025 -	5.9 Property Crimes	4.2 Person Crimes



Miami County Sheriff's Office

209 S Pearl St, Paola KS 66071

(913) 294-3232

What is a "Person Crime"

offenses that directly harm or threaten an individual's physical safety, well-being, or life, including acts like assault, robbery, and homicide

Some examples are assault and battery, homicide, sexual assault, kidnapping and domestic violence

89% of all person crimes reported in 2025 are Domestic Violence related

There was one homicide in Miami County in 2025, it was reported as Vehicular Homicide

crimes that involve the unauthorized taking, destruction, or interference with someone else's property, without the use or threat of force against the victim

What is a "Property Crime"

Some examples are burglary, theft/larceny, motor vehicle theft, property damage

73% of reported property crimes in 2025 are theft/identity theft

Protect yourself by securing outbuildings, utilize cameras, get GPS on your expensive equipment, building strong neighbor networks

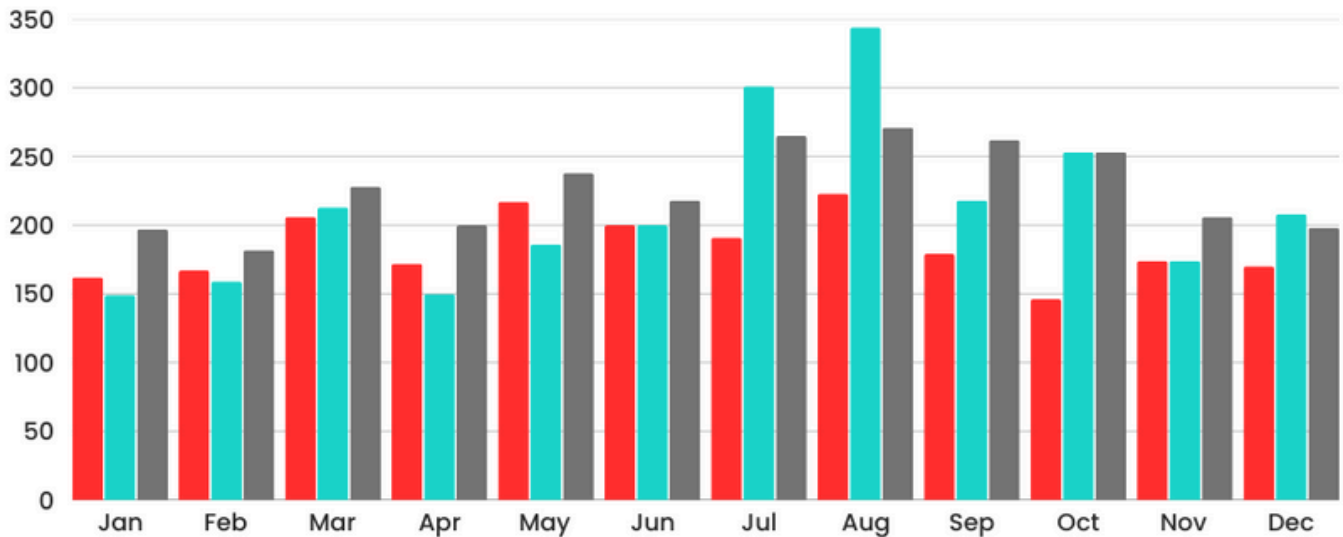
In 2024

Property Crime rate of rural Johnson County was 6.9/1,000

Property Crime rate of rural Franklin County was 7.6/1,000

57% of the residents of Miami County live in rural areas

2023/2024/2025 VIN'S BY MONTH



2023 = \$44,200
Total - 2206

2024 = \$51,085
Total - 2555

2025 = \$54,360
Total - 2718

The Miami County Sheriff's Office provides Vehicle Identification Number (VIN) inspections for individuals requiring inspections on vehicles with out-of-state titles. These inspections are conducted in accordance with Kansas state statute.

A fee of \$20 is charged per inspection. Of that amount, \$1 is remitted to the Kansas Highway Patrol, while the remaining \$19 is retained by the Miami County Sheriff's Office. Funds retained by the Sheriff's Office are deposited into the county general fund.

VIN inspections provide an important service to the public while ensuring compliance with state vehicle regulations and proper verification of vehicle ownership.

JAIL DIVISION

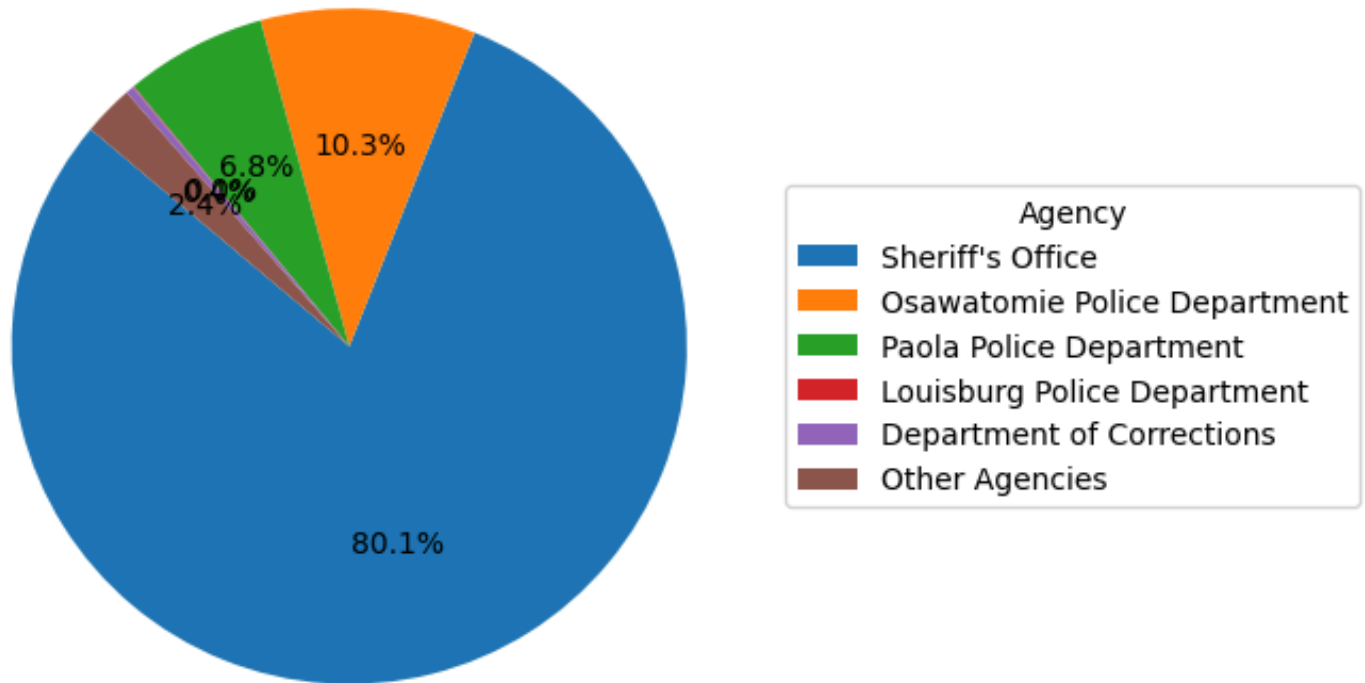


The Miami County Sheriff's Office Jail Division consists of 10 Deputy Jailers, 8 Deputies, and 4 Sergeants who are responsible for the safe, secure, and humane operation of the Miami County Jail.

Jail Division personnel oversee the care, custody, and control of inmates, ensuring the safety of staff, inmates, and the public. Their responsibilities include inmate supervision, intake and release procedures, classification, transportation, facility security, and compliance with state standards and regulations. Personnel also work closely with the courts, medical providers, and other agencies to ensure inmates' needs are met while maintaining order and security within the facility.

Deputy Jailers, Deputies, and Sergeants work 12-hour shifts to provide consistent supervision of inmates and effectively coordinate daily operations around the clock.

Inmate Admissions by Agency (Annual)



Sheriff's Office: 8,261
Osawatomie Police Department: 1,062
Paola Police Department: 700
Louisburg Police Department: 5
Department of Corrections: 41
Other Agencies: 250

In 2025, a total of 10,319 inmates were booked into the Miami County Jail. Of those individuals, approximately 80 percent were male and 20 percent were female.

Based on available demographic data, White individuals accounted for approximately 90 percent of the inmate population during the reporting year. These statistics provide insight into booking trends and assist the Sheriff's Office in planning staffing, programming, and resource allocation within the jail facility.

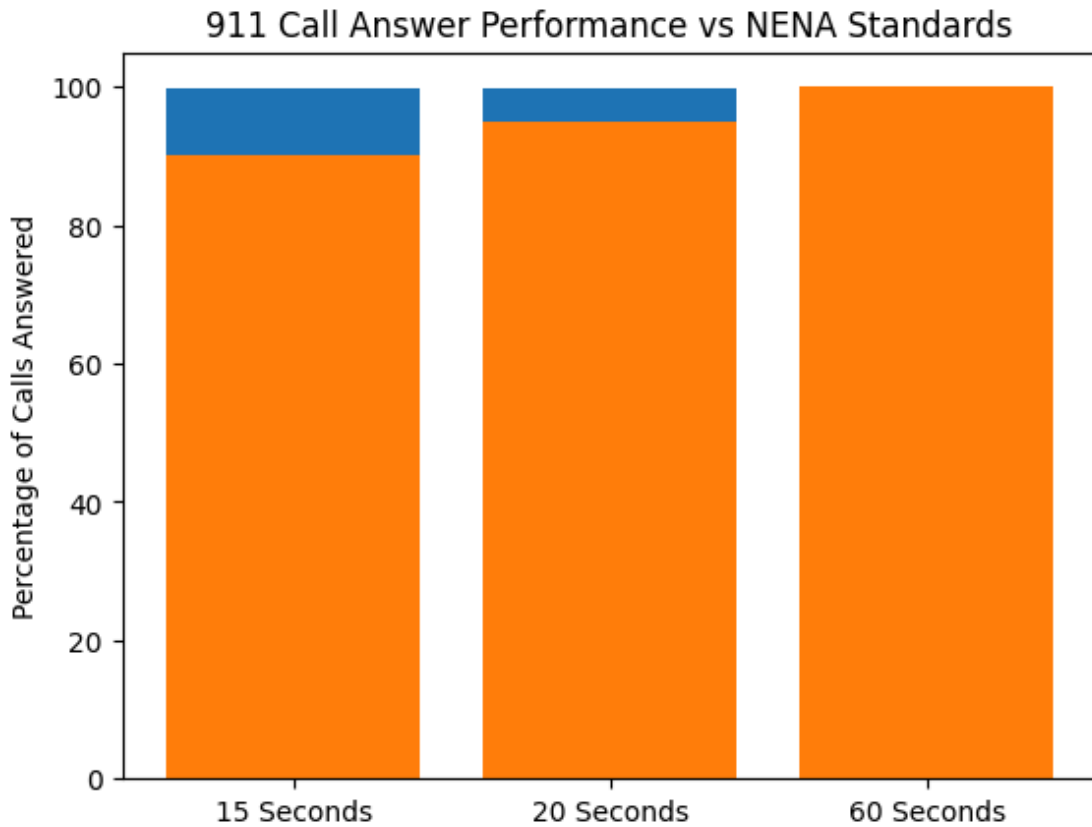
COMMUNICATIONS DIVISION



The Miami County Sheriff's Office Communications Division consists of 1 Dispatch Supervisor, 4 Lead Dispatchers, and 9 Dispatchers who serve as the critical link between the public and emergency responders.

Communications personnel are responsible for receiving emergency and non-emergency calls, dispatching law enforcement, fire, and emergency services, and coordinating responses to incidents throughout Miami County. The division provides dispatch services for the Miami County Sheriff's Office, Paola, Osawatomie, and Louisburg Police Departments; the Paola, Osawatomie, Louisburg, and Fontana Fire Departments; and the Kansas Department of Wildlife and Parks.

Dispatchers work 12-hour shifts to ensure continuous, reliable coverage and effective communication for first responders and the communities they serve, 24 hours a day.

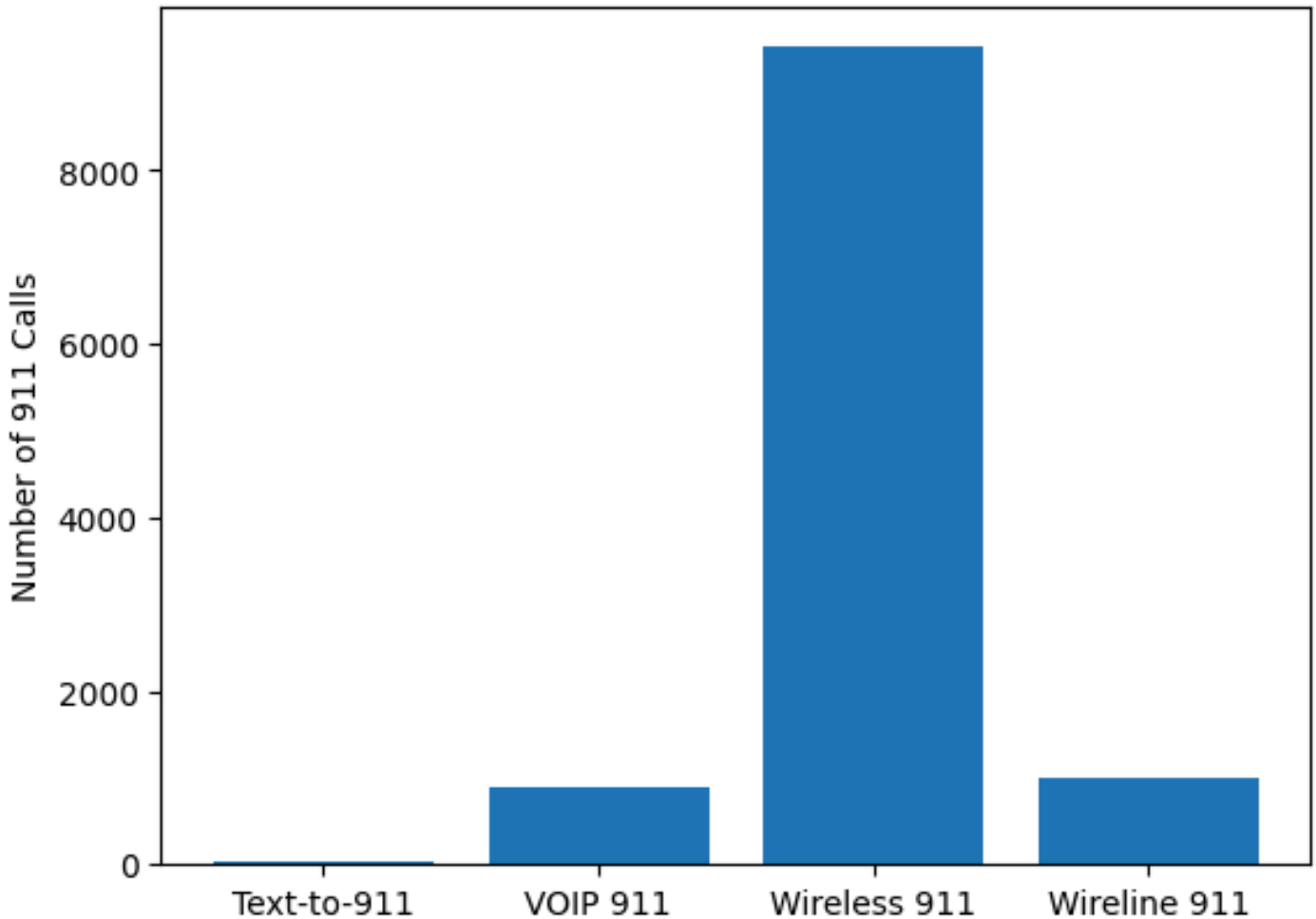


In 2025, the Miami County Communications Center received a total of 11,353 incoming 911 calls. Communications personnel consistently exceeded national standards for call answering times established by the National Emergency Number Association (NENA).

Calls were answered within 15 seconds 99.83% of the time, within 20 seconds 99.88% of the time, and within 60 seconds 99.99% of the time. NENA standards require that 911 calls be answered within 15 seconds at least 90% of the time, within 20 seconds 95% of the time, and within 60 seconds 100% of the time.

These results reflect the dedication, professionalism, and efficiency of the Communications Center staff in providing timely emergency response services to the citizens and visitors of Miami County.

911 Call Types Received by the Communications Center



During the reporting year, the Miami County Communications Center handled a wide variety of 911 call types using multiple technologies.

The center received 9,423 wireless 911 calls, 986 wireline 911 calls, and 896 Voice over Internet Protocol (VOIP) 911 calls. In addition, dispatchers processed 43 Text-to-911 calls, providing an alternative means of emergency communication for individuals unable to place a voice call.

The diversity of call types highlights the Communications Center's ability to adapt to evolving technology while ensuring emergency services remain accessible to all who live or visit Miami County. Communications personnel are trained to efficiently manage each call type to ensure timely and appropriate emergency response.



78,922

Total 911 and non-emergency calls

216

Average calls per day

9

Average calls per hour

In 2025, the Miami County Communications Division handled a total of 78,922 combined 911 and non-emergency calls. This volume equates to an average of 216 calls per day, or approximately 9 calls per hour, demonstrating the constant demand placed on communications personnel.

These calls required accurate information gathering, rapid decision-making, and effective coordination to ensure law enforcement, fire, and emergency services were dispatched promptly and appropriately. The sustained call volume highlights the critical role the Communications Division plays in supporting public safety operations throughout Miami County.

COMMUNICATIONS

EMERGENCY MANAGEMENT DIVISION



The Miami County Sheriff's Office Emergency Management Division consists of one full-time Emergency Management Coordinator and one part-time Coordinator. The Sheriff serves as the Emergency Management Director and provides oversight for all emergency management operations within the county.

The Emergency Management Division is responsible for planning, coordinating, and managing the county's preparedness, response, recovery, and mitigation efforts related to natural disasters, severe weather, public health emergencies, and other critical incidents. This includes developing and maintaining emergency plans, coordinating with local, state, and federal agencies, and supporting emergency response partners during incidents.

Through training, planning, and collaboration, the Emergency Management Division works to enhance community resilience and ensure Miami County is prepared to respond effectively to emergencies.

EMERGENCY MANAGEMENT

The Miami County Sheriff's Office Emergency Management program remained highly active throughout 2025, supporting emergency response, planning, training, and special events across the county. Activities ranged from severe weather response and hazardous materials incidents to large-scale event planning and regional coordination.

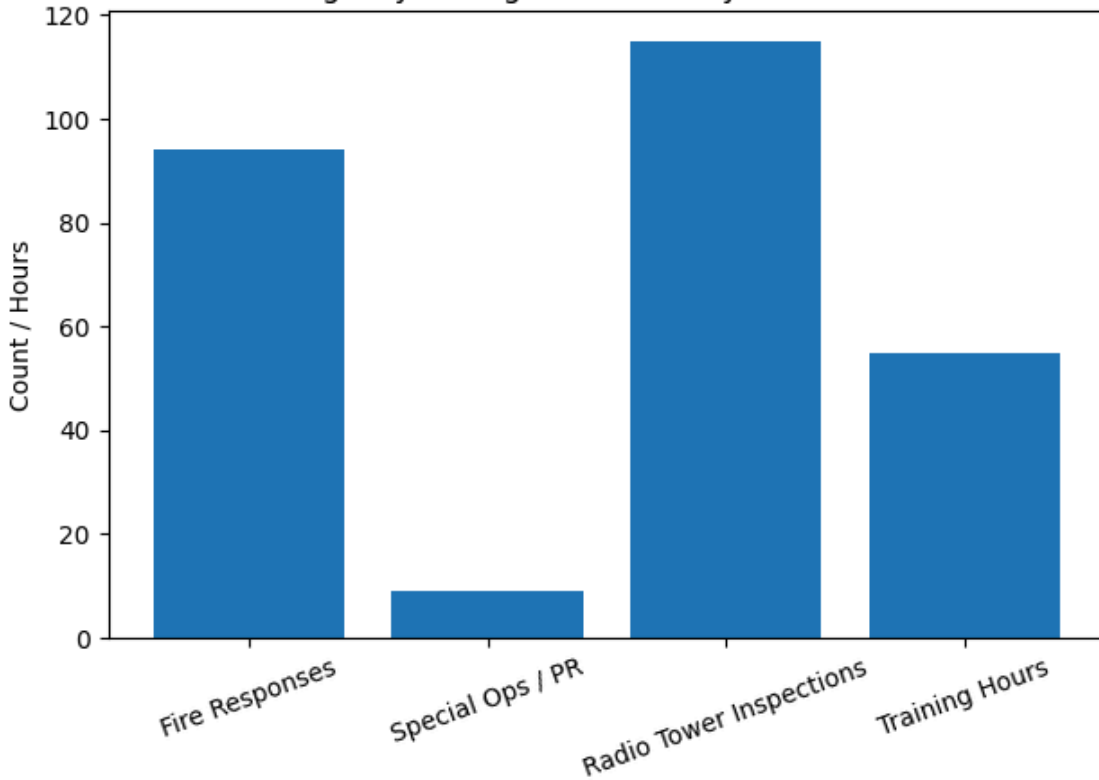
In January, a major winter storm required activation of the Emergency Operations Center (EOC) in support of the State Emergency Operations Center. Coordination included Kansas Department of Emergency Management (KDEM) briefings and collaboration with the American Red Cross regarding potential sheltering needs. While a formal shelter was not required, the Sheriff's Office Community Room was opened to assist impacted residents. An after-action review was conducted with KDEM and the National Weather Service.

Throughout the year, Emergency Management coordinated and participated in Local Emergency Planning Committee (LEPC) meetings, severe weather preparedness activities, hazardous material spill responses, diesel and oil spill incidents, and multiple command post operations.

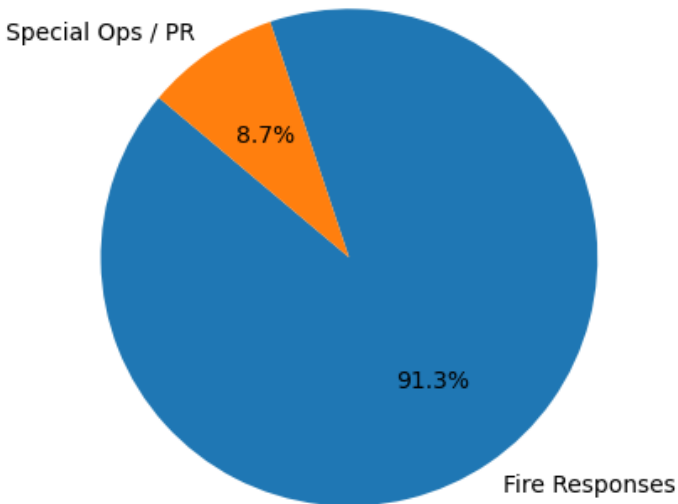
Significant efforts were dedicated to Dancefestopia planning and support, including safety inspections, fire coordination, and serving as Command Post Safety Officer during the event.



Emergency Management Activity Metrics - 2025



Emergency Management Response Breakdown - 2025

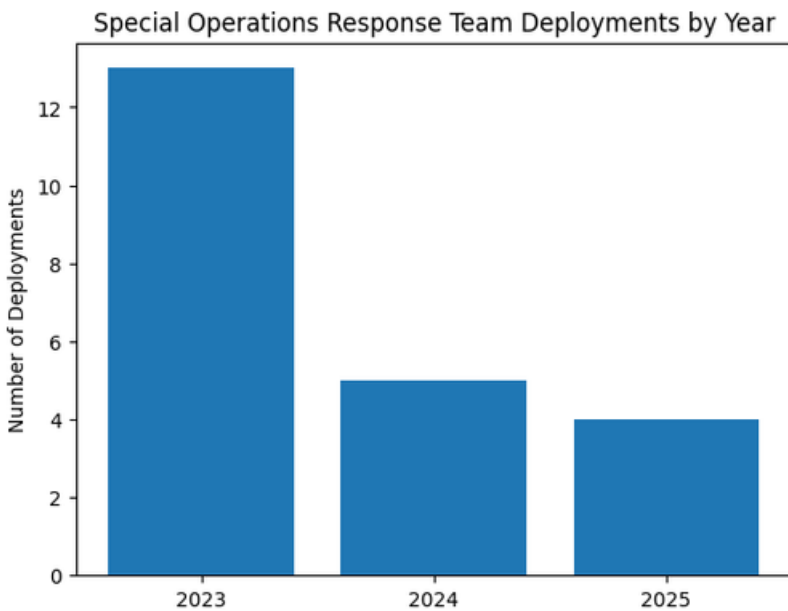


Emergency Management also supported numerous community and public safety events, including the Miami County Fair, July 4th activities, tree lighting ceremonies, school safety meetings, Citizens Academy presentations, and Sheriff’s Office special operations.

Routine responsibilities continued year-round, including weekly maintenance of the Mine-Resistant Ambush Protected (MRAP) vehicle and Command Center, monthly storm siren testing, and completion of 115 radio tower inspections to ensure reliable communications infrastructure countywide.



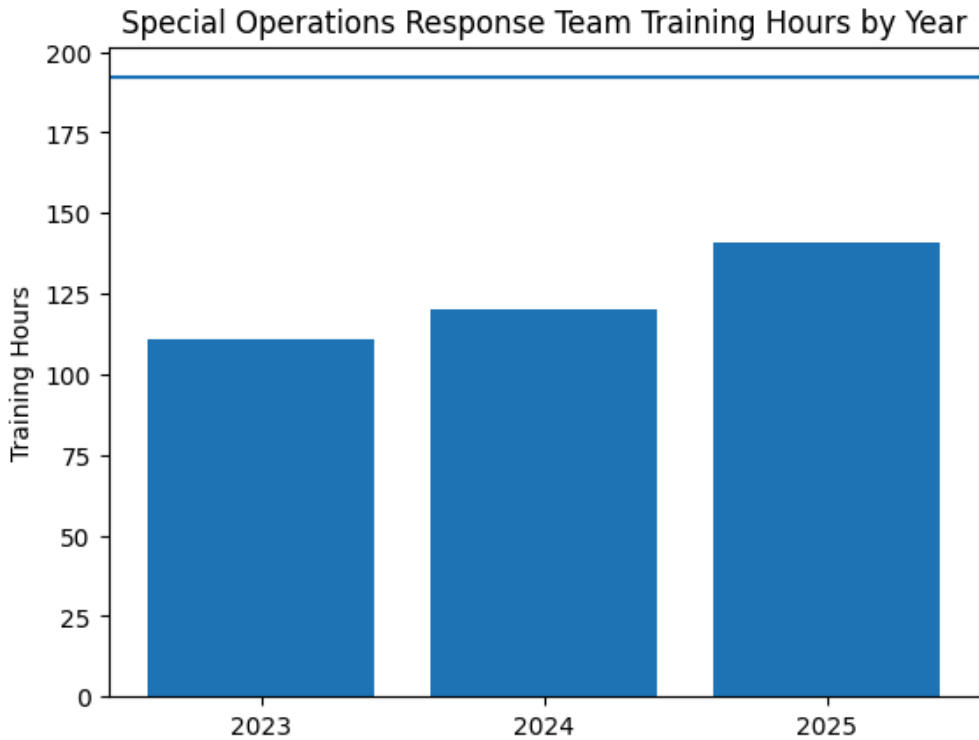
The Miami County Sheriff's Office Special Operations Response Team (SORT) is comprised of 10 highly trained members who utilize specialized equipment and advanced training to respond to high-risk and critical incidents. The team is deployed during situations that require enhanced tactical capabilities, including high-risk warrant service, barricaded subjects, and other incidents that pose an elevated threat to public safety.



A key asset of the team is the Mine-Resistant Ambush Protected (MRAP) vehicle, which provides armored protection for deputies during high-risk operations and rescue situations. The MRAP was acquired from the United States military at a cost of \$5,000 in 2023. Both the purchase and ongoing maintenance of the vehicle are funded through the Special Drug Forfeiture Fund, ensuring no burden to local taxpayers.



Through continued training, specialized equipment, and careful fiscal stewardship, the Special Operations Response Team enhances the Sheriff's Office's ability to safely resolve dangerous situations while protecting deputies, citizens, and surrounding communities.





The Miami County Sheriff's Office Court Security Division is responsible for maintaining a safe and secure environment for judges, court staff, attorneys, jurors, and the public within county court facilities. The division ensures orderly court operations while protecting the integrity of the judicial process.

The Court Security Division is staffed by two full-time deputies and two part-time deputies who are assigned to courthouse security duties. Their responsibilities include screening individuals entering court facilities, maintaining courtroom security, responding to disturbances, and assisting with the safe movement of inmates within the courthouse.

Through a visible presence and coordinated security efforts, the Court Security Division plays a vital role in ensuring the safety of all individuals conducting business within the Miami County court system.

K-9 UNIT

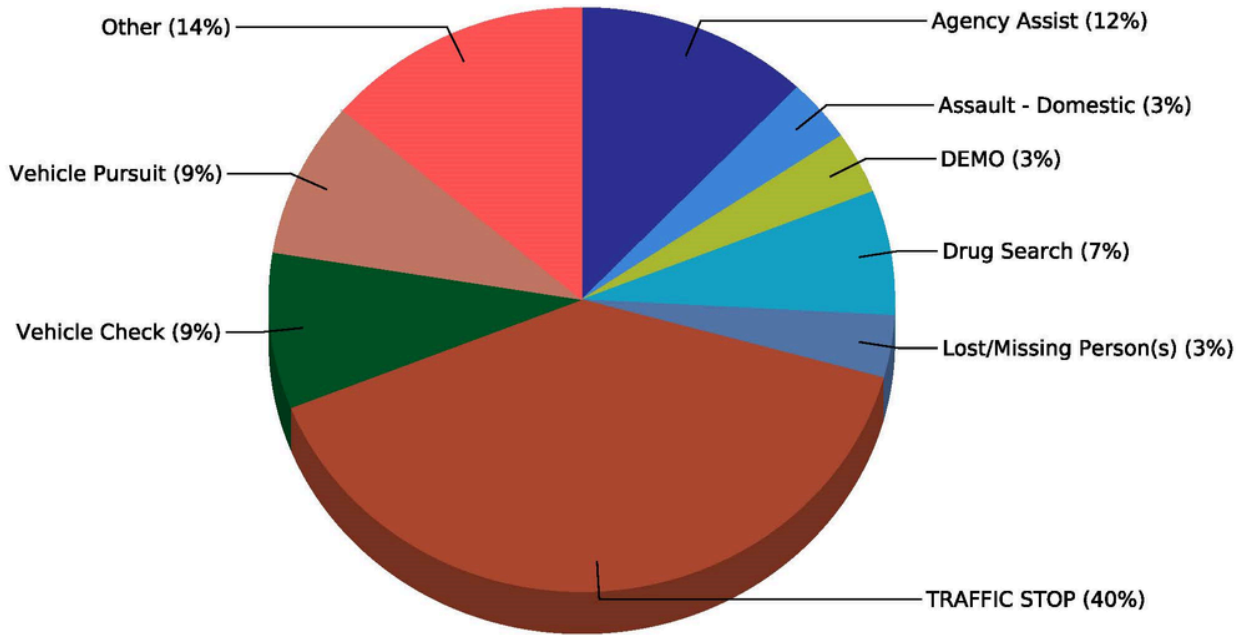


The Miami County Sheriff's Office K-9 Unit plays a critical role in supporting law enforcement operations and enhancing public safety throughout the county. K-9 teams are specially trained to assist with suspect apprehension, narcotics detection, tracking, and search operations, providing capabilities that significantly increase officer safety and operational effectiveness.

In 2025, the K-9 team was deployed 58 times in support of patrol and investigative operations. The team also demonstrated a strong commitment to ongoing professional development by attending 47 of 52 scheduled weekly training sessions. K-9 training is conducted every Wednesday, excluding holidays, vacation, or sick leave, and is essential to maintaining proficiency, reliability, and handler-canine readiness.

Through consistent training and operational deployment, the K-9 Unit remains a valuable asset to the Sheriff's Office and an important resource for the safety of both deputies and the community.

Incident Count



YEAST/CLAY



HONOR GUARD

MIAMI COUNTY
FIRST RESPONDERS MEMORIAL



The Miami County Sheriff's Office Honor Guard represents the agency with professionalism, dignity, and respect during ceremonial and special events. The Honor Guard serves as a symbol of honor and tradition while paying tribute to law enforcement, veterans, and the community.

In 2025, the Honor Guard achieved a significant milestone by providing flag presentations at a Kansas City Royals game for the first time. This opportunity was a proud moment for the Sheriff's Office and highlighted the professionalism of the Honor Guard on a regional stage while representing Miami County with honor.

The Honor Guard continues to participate in community events, memorial services, and ceremonies, strengthening public trust and fostering pride in the Sheriff's Office and the community it serves.



COMMUNITY RELATIONS



The Miami County Sheriff's Office remains committed to building strong relationships with the community through active participation in public events and outreach efforts. Throughout 2025, Sheriff's Office personnel were involved in more than 60 community events, including public safety demonstrations, school functions, parades, and community gatherings.

These events provide valuable opportunities for deputies and staff to engage with residents, promote public safety awareness, and strengthen trust between law enforcement and the community. In certain instances, personnel costs associated with these events were reimbursed, ensuring responsible use of public funds while maintaining a visible and positive law enforcement presence.

Through continued community engagement, the Sheriff's Office works to foster cooperation, transparency, and mutual respect with the citizens of Miami County.



COMMUNITY RELATIONS



The Miami County Sheriff's Office Citizen's Academy provides residents with an inside look at the operations, responsibilities, and challenges of modern law enforcement. The program is designed to increase transparency, promote understanding, and strengthen relationships between the Sheriff's Office and the community.

In 2025, the Sheriff's Office hosted two Citizen's Academy classes, giving participants the opportunity to learn directly from deputies and staff through hands-on demonstrations, presentations, and facility tours. Topics included patrol operations, investigations, jail operations, emergency communications, and use-of-force decision-making.

The Citizen's Academy continues to be a valuable tool for community engagement, fostering informed citizens and encouraging open dialogue between the Sheriff's Office and the residents of Miami County.

TRAINING



Ongoing training is essential to ensuring effective, professional, and lawful law enforcement operations. The Miami County Sheriff's Office places a strong emphasis on training to reduce the risk of litigation, protect the safety of employees and the public, and ensure deputies and staff are prepared to respond appropriately to a wide range of situations.

Kansas law requires all certified law enforcement officers to complete a minimum of 40 hours of training each year. The Sheriff's Office meets and exceeds this requirement by providing training in areas such as legal updates, use of force, de-escalation, defensive tactics, emergency response, and critical incident management.

By investing in continuous training, the Sheriff's Office enhances accountability, reinforces best practices, and ensures personnel are equipped with the knowledge and skills necessary to serve the community safely and effectively.

RECORDS DIVISION



The Miami County Sheriff's Office Records Division plays a vital role in supporting law enforcement operations and ensuring transparency, accuracy, and compliance with legal requirements. The division is responsible for the collection, maintenance, and dissemination of official records generated by the Sheriff's Office. The division is supported by a Records Supervisor who is also the Executive Assistant to the Sheriff and two full time Operations Support Specialists.

Records personnel manage a wide range of documents, including incident and accident reports, arrest records, warrants, protection orders, and other law enforcement records. The division also responds to public record requests in accordance with Kansas law, ensuring timely and appropriate access to information while safeguarding sensitive and confidential data.

Through attention to detail and a commitment to accuracy, the Records Division provides essential support to deputies, investigators, the courts, and the public, contributing to the efficient operation of the Miami County Sheriff's Office.



In 2025, the Miami County Sheriff's Office established its first School Resource Officer (SRO) position, marking an important step in expanding school safety and strengthening partnerships with local educational institutions.

The School Resource Officer is assigned to Queen of the Holy Rosary School in Wea, where the deputy provides a visible law enforcement presence, enhances campus safety, and serves as a resource for students, staff, and parents. In addition to security responsibilities, the SRO works to build positive relationships with students, promote safety awareness, and assist school administration as needed.

The SRO position is funded through a partnership between the school and a grant, ensuring the program enhances student safety without placing an additional burden on county taxpayers.

The School Resource Officer program reflects the Sheriff's Office's commitment to proactive safety measures and collaborative solutions to protect Miami County's students and schools.



The Miami County Sheriff's Office Offender Registration Division is responsible for monitoring and maintaining compliance for registered sex, violent, and drug offenders who reside, work, or attend school within Miami County. The division ensures offenders meet all registration requirements mandated by Kansas law, helping to promote public safety and accountability.

Responsibilities of the Offender Registration Division include processing registrations, verifying addresses and employment information, monitoring compliance deadlines, and coordinating enforcement actions when violations are identified. The division works closely with local, state, and federal partners to ensure accurate and up-to-date offender information.

During the reporting year, the Sheriff's Office conducted Operation Aware, a targeted compliance initiative focused on offender accountability. As part of this operation, deputies conducted 28 sex offender compliance checks, 10 drug offender compliance checks, and 8 violent offender compliance checks. These efforts resulted in 4 arrests, 11 cases generated for submission to the Miami County Attorney's Office, and the seizure of 18 electronic devices for investigative purposes.

Operation Aware also led to additional cases being generated through partner agencies, including two cases through the Osawatometie Police Department, two cases through the Kansas Bureau of Investigation, and one case through the Kansas Department of Corrections.

Through proactive enforcement, interagency cooperation, and continued monitoring, the Offender Registration Division plays a critical role in protecting the community and ensuring offender compliance within Miami County.

The logo for the Miami County Sheriff's Office Professional Standards Unit is a circular emblem. It features a central shield with a landscape scene: a sun rising over mountains, a river with a bridge, and a person plowing a field with a horse. The shield is set against a background of a yellow laurel wreath. Below the wreath is a banner with the text "EST. 1855". The words "PROFESSIONAL STANDARDS UNIT" are written in large, bold, black capital letters across the top of the emblem.

PROFESSIONAL STANDARDS UNIT

The Miami County Sheriff's Office Professional Standards Division is responsible for maintaining the integrity, accountability, and professionalism of the agency. The division ensures that deputies and staff adhere to established policies, procedures, and ethical standards while providing fair and consistent oversight.

Key responsibilities of the Professional Standards Division include conducting internal investigations, managing the internal commendations process, and overseeing aspects of training and professional development. The division also plays a critical role in the hiring and background investigation process, ensuring that new employees meet the high standards expected of Sheriff's Office personnel.

In addition, the Professional Standards Division conducts thorough reviews of vehicle pursuits and use-of-force incidents to ensure compliance with policy, identify training needs, and promote continuous improvement. These reviews help reduce risk, enhance officer safety, and maintain public trust. Through transparency, accountability, and continuous evaluation, the Professional Standards Division supports the Sheriff's Office's commitment to professional law enforcement services and public confidence in Miami County.

Locate where crimes occur

CRIMINAL ANALYST

Look for trends to solve puzzling issues

Gather & analyze crime statistics & produce reports



The Miami County Sheriff's Office Criminal Analyst position plays a key role in supporting investigations, strategic planning, and data-driven decision-making. The Criminal Analyst is responsible for collecting, analyzing, and interpreting crime data to identify trends, patterns, and emerging issues that assist command staff and deputies in proactive enforcement and resource deployment.

In addition to analytical responsibilities, the Criminal Analyst oversees the Sheriff's Office grant writing process. This includes identifying funding opportunities, preparing grant applications, managing reporting requirements, and ensuring compliance with grant guidelines. Grant funding helps support equipment purchases, training initiatives, and specialized programs without placing additional financial burden on county taxpayers.

Through crime analysis and effective grant management, the Criminal Analyst contributes to informed decision-making, operational effectiveness, and the long-term sustainability of Sheriff's Office programs and services.